

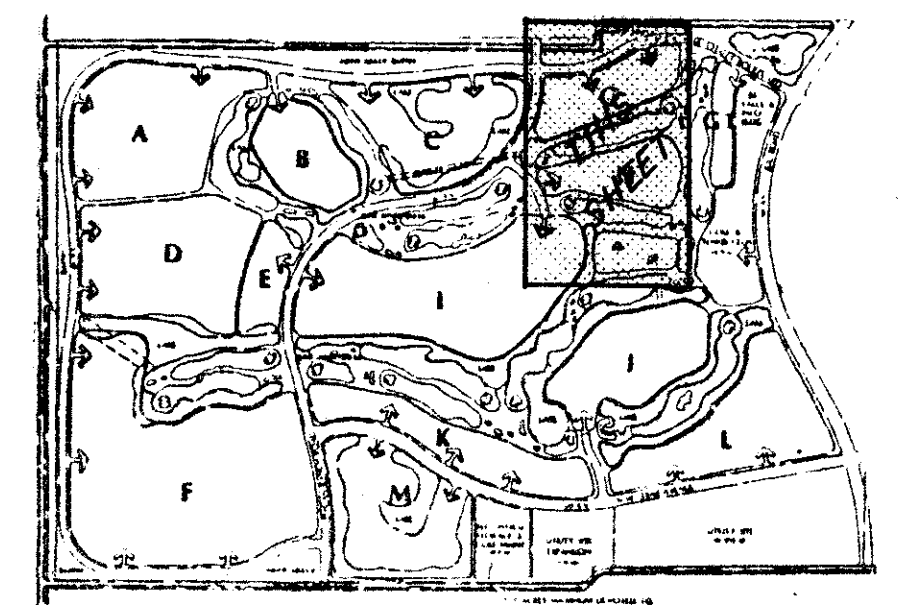
55/14

DRAWING NUMBER  
PLAN HOLD CORPORATION • IRVINE, CALIFORNIA  
REORDER BY NUMBER 07504

DRAWING NUMBER

DRAWING NUMBER

DRAWING NUMBER



KEY MAP  
NOT TO SCALE

# ABERDEEN - PLAT NO. 2

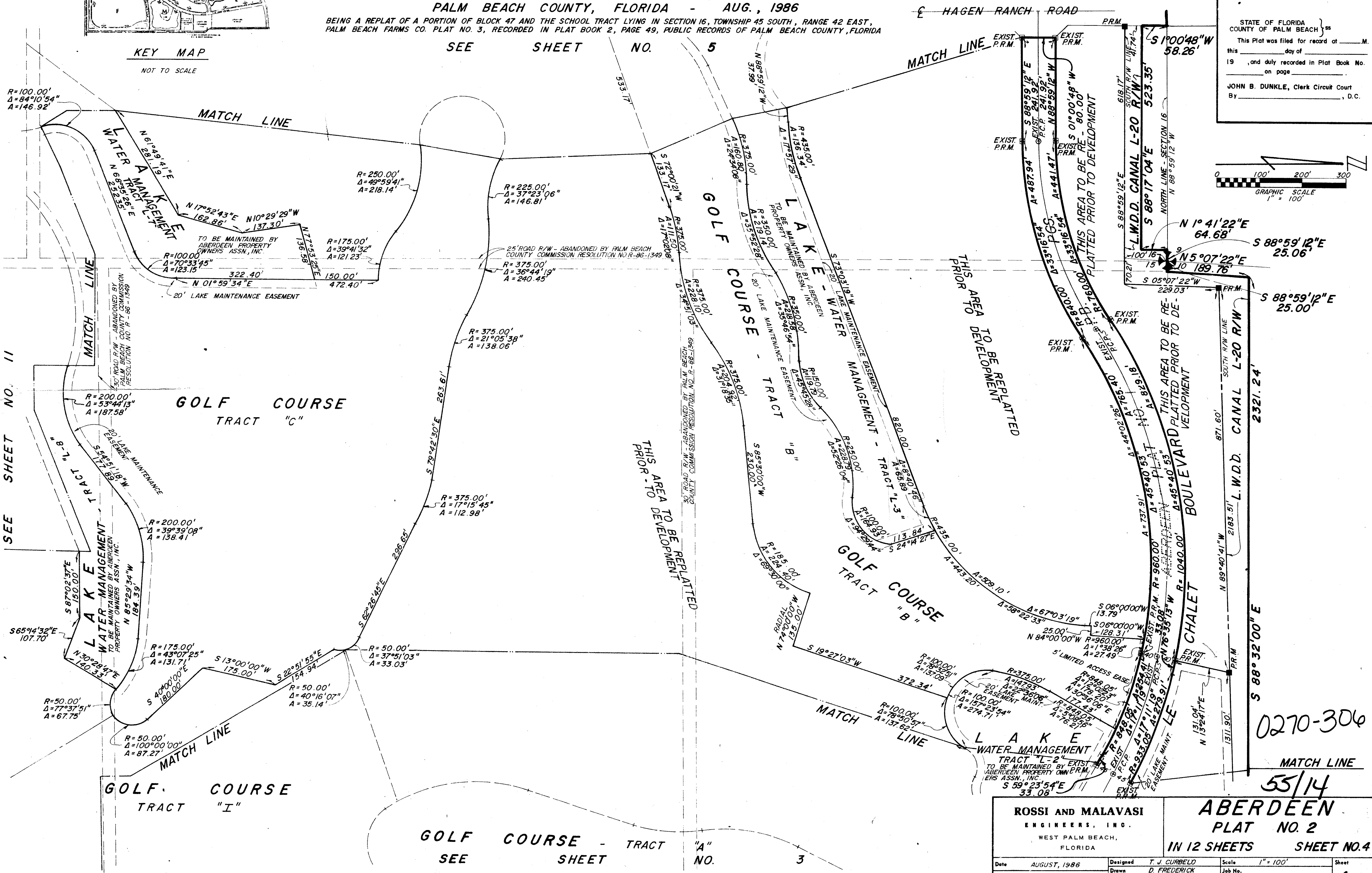
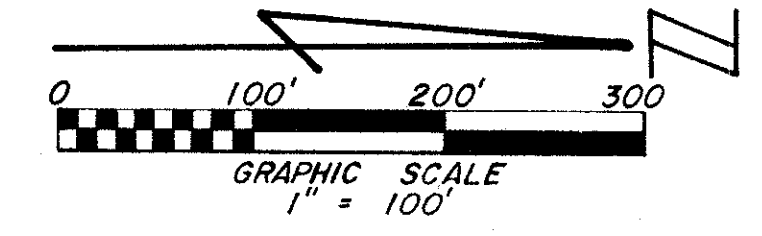
A PORTION OF A (P.U.D.)  
SECTIONS 15 & 16, TOWNSHIP 45 SOUTH, RANGE 42 EAST

PALM BEACH COUNTY, FLORIDA - AUG., 1986  
BEING A REPLAT OF A PORTION OF BLOCK 47 AND THE SCHOOL TRACT LYING IN SECTION 16, TOWNSHIP 45 SOUTH, RANGE 42 EAST,  
PALM BEACH FARMS CO. PLAT NO. 3, RECORDED IN PLAT BOOK 2, PAGE 49, PUBLIC RECORDS OF PALM BEACH COUNTY, FLORIDA

SEE SHEET NO. 5

14

STATE OF FLORIDA }  
COUNTY OF PALM BEACH } ss  
This Plat was filed for record at \_\_\_\_\_ M.  
this \_\_\_\_\_ day of \_\_\_\_\_  
19 \_\_\_\_\_, and duly recorded in Plat Book No. \_\_\_\_\_  
on page \_\_\_\_\_  
JOHN B. DUNKLE, Clerk Circuit Court  
By \_\_\_\_\_, D.C.



SEE SHEET NO. 11

THIS AREA TO BE REPLATTED  
PRIOR TO DEVELOPMENT

THIS AREA TO BE REPLATTED  
PRIOR TO DEVELOPMENT

THIS AREA TO BE RE-  
PLATTED PRIOR TO DE-  
VELOPMENT

0270-306

55/14

**ROSSI AND MALAVASI**  
ENGINEERS, INC.  
WEST PALM BEACH,  
FLORIDA

**ABERDEEN**  
PLAT NO. 2  
IN 12 SHEETS SHEET NO. 4

Date	AUGUST, 1986	Designed	T. J. CURBELD	Scale	1" = 100'	Sheet	4 of 12
Approved		Drawn	D. FREDERICK	Job No.			
		Checked		File No.			